

## Modular Cooking Range Line EVO700 Two Wells Freestanding Electric Fryer 15 liter

ITEM # \_\_\_\_\_

MODEL # \_\_\_\_\_

NAME # \_\_\_\_\_

SIS # \_\_\_\_\_

AIA # \_\_\_\_\_

**372082 (Z7FREH2GF0)**

15+15-lt electric fryer with 2 "V" shape wells (external heating elements), 2 baskets and lids included - free standing

### Short Form Specification

#### Item No. \_\_\_\_\_

To be installed on height adjustable feet in stainless steel. High efficiency infrared heating elements (20kW) attached to the outside of the wells. Deep drawn V-shaped wells. Oil drains through a tap into a container under the well. Exterior panels in stainless steel with Scotch Brite finish. One piece pressed work top in 1.5 mm thick stainless steel. Right-angled side edges to allow flush-fitting junction between units.

### Main Features

- Unit to be mounted on height adjustable feet in stainless steel.
- Deep drawn V-Shaped wells.
- High efficiency infrared heating elements are attached to the outside of the wells.
- Thermostatic regulation of oil temperature up to a maximum of 185 °C.
- Overheat protection thermostat as standard on all units.
- Oil drains through a tap into a drainage container positioned under the well.
- All major compartments located in front of unit for ease of maintenance.
- IPx4 water protection.
- Optional portable oil quality monitoring tool (code 9B8081) for efficient oil management.

### Construction

- Interior of well with rounded corners for ease of cleaning.
- All exterior panels in Stainless Steel with Scotch Brite finishing.
- One piece pressed 1.5 mm work top in Stainless steel.
- Model has right-angled side edges to allow flush fitting joints between units, eliminating gaps and possible dirt traps.

### Sustainability

- This model is compliant with Swiss Energy Efficiency Ordinance (730.02).

APPROVAL: \_\_\_\_\_

### Included Accessories

- 2 of Door for open base cupboard PNC 206342
- 2 of Basket for 14 and 15lt fryers PNC 921691

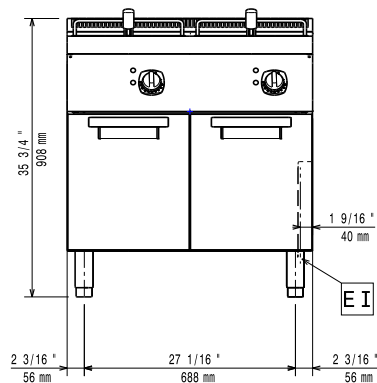
### Optional Accessories

- Junction sealing kit PNC 206086 ☐
- 4 wheels, 2 swivelling with brake (EVO700/900). It is mandatory to install with base supports for feet/wheels. PNC 206135 ☐
- Flanged feet kit PNC 206136 ☐
- Frontal kicking strip for concrete installation, 800 mm PNC 206148 ☐
- Frontal kicking strip for concrete installation, 1000 mm PNC 206150 ☐
- Frontal kicking strip for concrete installation, 1200 mm PNC 206151 ☐
- Frontal kicking strip for concrete installation, 1600 mm PNC 206152 ☐
- Frontal handrail 800 mm PNC 206167 ☐
- Frontal kicking strip, 800 mm PNC 206176 ☐
- Frontal kicking strip, 1000 mm PNC 206177 ☐
- Frontal kicking strip, 1200 mm PNC 206178 ☐
- Frontal kicking strip, 1600 mm PNC 206179 ☐
- Large handrail (portioning shelf) 800 mm PNC 206186 ☐
- Frontal handrail 1200 mm PNC 206191 ☐
- Frontal handrail 1600 mm PNC 206192 ☐
- 4 feet for concrete installation (not for 900 line freestanding grill) PNC 206210 ☐
- Sediment tray for 15lt fryers PNC 206235 ☐
- Right and left side handrails PNC 206240 ☐
- Pair of side kicking strips PNC 206249 ☐
- Pair of side kicking strips (concrete installation) PNC 206265 ☐
- Oil drain pipe for 15lt free standing fryer PNC 206301 ☐
- Chimney upstand, 800 mm PNC 206304 ☐
- 2 side covering panels, height 700 mm, depth 700 mm PNC 206319 ☐
- Door for open base cupboard PNC 206342 ☐
- Base support for feet or wheels - 800mm (EVO700/900) PNC 206367 ☐
- Base support for feet or wheels - 1200mm (EVO700/EVO900) PNC 206368 ☐
- Base support for feet or wheels - 1600mm (EVO700/900) PNC 206369 ☐
- Rear paneling - 800mm (EVO700/900) PNC 206374 ☐
- Rear paneling - 1000mm (EVO700/900) PNC 206375 ☐
- Rear paneling - 1200mm (EVO700/900) PNC 206376 ☐
- Chimney grid net, 400mm PNC 206400 ☐
- Basket for 14 and 15lt fryers PNC 921691 ☐
- 2 half size baskets for 14 and 15lt fryers PNC 921692 ☐

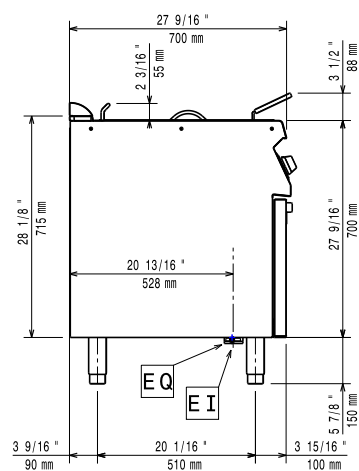
- Filter for fryer oil collection basin for 7lt, 14lt, 15lt free standing fryers PNC 921693 ☐
- Unclogging rod for 15lt fryers drainage pipe PNC 921695 ☐
- Deflector for floured products for the 15lt fryer PNC 921696 ☐

**Modular Cooking Range Line  
EVO700 Two Wells Freestanding  
Electric Fryer 15 liter**

## Front

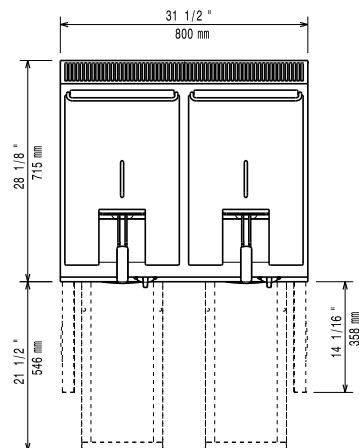


## Side



**EI** = Electrical inlet (power)  
**EQ** = Equipotential screw

**Top**



## Electric

**Supply voltage:** 380-400 V/3N ph/50-60 Hz

**Predisposed for:**

**Total Watts:** 20 kW

### Key Information:

If appliance is set up or next to or against temperature sensitive furniture or similar, a safety gap of approximately 150 mm should be maintained or some form of heat insulation fitted.

**Usable well dimensions (width):** 240 mm

**Usable well dimensions (height):** 505 mm

**Usable well dimensions (depth):** 380 mm

**Well capacity:** 13 lt MIN; 15 lt MAX

**Thermostat Range:** 105 °C MIN; 185 °C MAX

**Net weight:** 81 kg

**Shipping weight:** 89 kg

**Shipping height:** 1130 mm

**Shipping width:** 820 mm

Shipping depth: 860 mm

**Shipping volume:** 0.8 m<sup>3</sup>

**Certification group:** EFE72M15